



Hwy 371 Study



July 28, 2020

ABOUT THE PROJECT

- MnDOT will be reconstructing Hwy 371 through Hackensack (between County Road 40 and County Road 5 in Hackensack) in the next few years.

Benefits:



Increase
safety



Reduce
speed



Improved or new
bike and pedestrian
facilities



Improve County
Rd 5 intersection



Improve
drainage

SCHEDULE



Here's what we've been up to...

ENGAGEMENT SUMMARY



ENGAGEMENT SUMMARY

Summary

- One-on-one meetings with 19 businesses and property owners along the corridor from November 2019 – February 2020
- 4 Public Advisory Committee Meetings
- Chainsaw Days (2019)
- Sweetheart Days (2019)



371 Hwy 371 Study

PROJECT UPDATE:
Over the past few months, our project team has been regularly meeting with a Stakeholder Advisory Committee to help shape the vision for the Highway 371 corridor and to provide input on design alternatives to best meet that vision's needs. The committee is also helping to identify issues in the community and act as ambassadors for sharing information about the project to encourage participation. Additional engagement also occurred at key community events that took place this fall. The corridor vision that we are creating is important to establish at the beginning of the study because it will help guide the future design for the project. Our project team will continue engaging the community throughout the different stages of the project.

Project Schedule

Time Period	Key Activities
FALL/WINTER 2019	Stakeholder input and alternative development
WINTER 2020	Preferred alternative development
SPRING 2020	Community stakeholder engagement and preferred alternative selection
SUMMER 2020 - WINTER 2021	Ongoing engagement
FALL 2020	Begin final design
2021-2023	Project development and design
SPRING 2023	Tennessee construction

CONCEPTUAL DESIGN RENDERING:
The design concept shown includes one travel lane in each direction, a center turn lane, and sidewalks and parallel parking on both sides through the downtown area. A roundabout is being considered at the intersection of Highway 371 and County Road 5.

LOCAL BUSINESS MEETINGS:
Before we further develop this concept, MDOT will be meeting with several businesses along the corridor to discuss the design features and gather input. A member from our project team will be reaching out directly to adjacent property owners to schedule one-on-one meetings in early December. Those businesses will be receiving a call from our project team within the week. However, we are happy to meet with any interested business owner in the area. If you do not receive a call from our project team but would like to schedule a meeting, please contact tess.nejedlo@mdot.com. All meeting requests are welcome!

ONLINE MEETING OVERVIEW

 Duration: **May 8–25, 2020 (17 days)**

 **Website Access Sources:**

Social Media Link	Direct Link	Referral Link	Internet Searches
71%	18%	10%	1%



Top Response Locations:

- Brainerd
- Breezy Point
- Brooklyn Park
- Hackensack
- Maple Grove
- Pequot Lakes
- Pine River
- Richfield
- Roseville
- Walker



Total Online Visitors:

1,411 people



Total Form Responses:

430 submissions



Average Time on Site:

3:36 minutes

Online Meeting Link

<https://mplshdrshared.com/hwy371/>

Let's take a look...

HERE'S WHERE WE ENDED UP



CURRENT PREFERRED DESIGN

- Based on stakeholder and community input, our project team identified an initial design concept to move forward for additional review and development

Elements

- 3-lane option
 - One thru lane in each direction and a center turn lane
 - Parallel parking
 - 6' sidewalk on each side of Hwy 371 throughout the downtown area
- Meets the project goal to enhance mobility and safety for all users
- Stays within the existing MnDOT right-of-way



CORRIDOR RENDERINGS

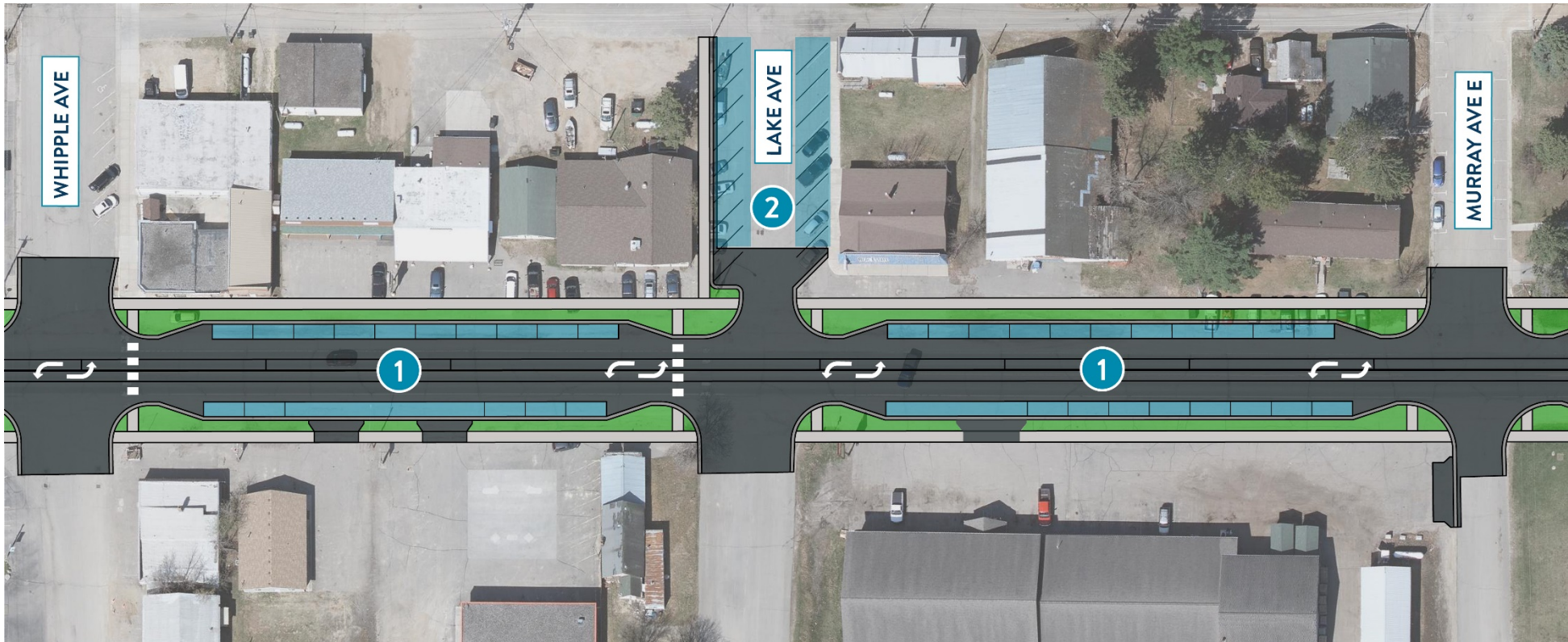


Improving safety:

DOWNTOWN AREA IMPROVEMENTS



- Parallel parking spaces will be available in the downtown area on both sides of Highway 371 between Murray Ave. and Whipple Ave.
- The sidewalk on Lake Ave., west of Highway 371, will be extended to the alley and additional parking spaces will be available on the street.



Corridor Impact:

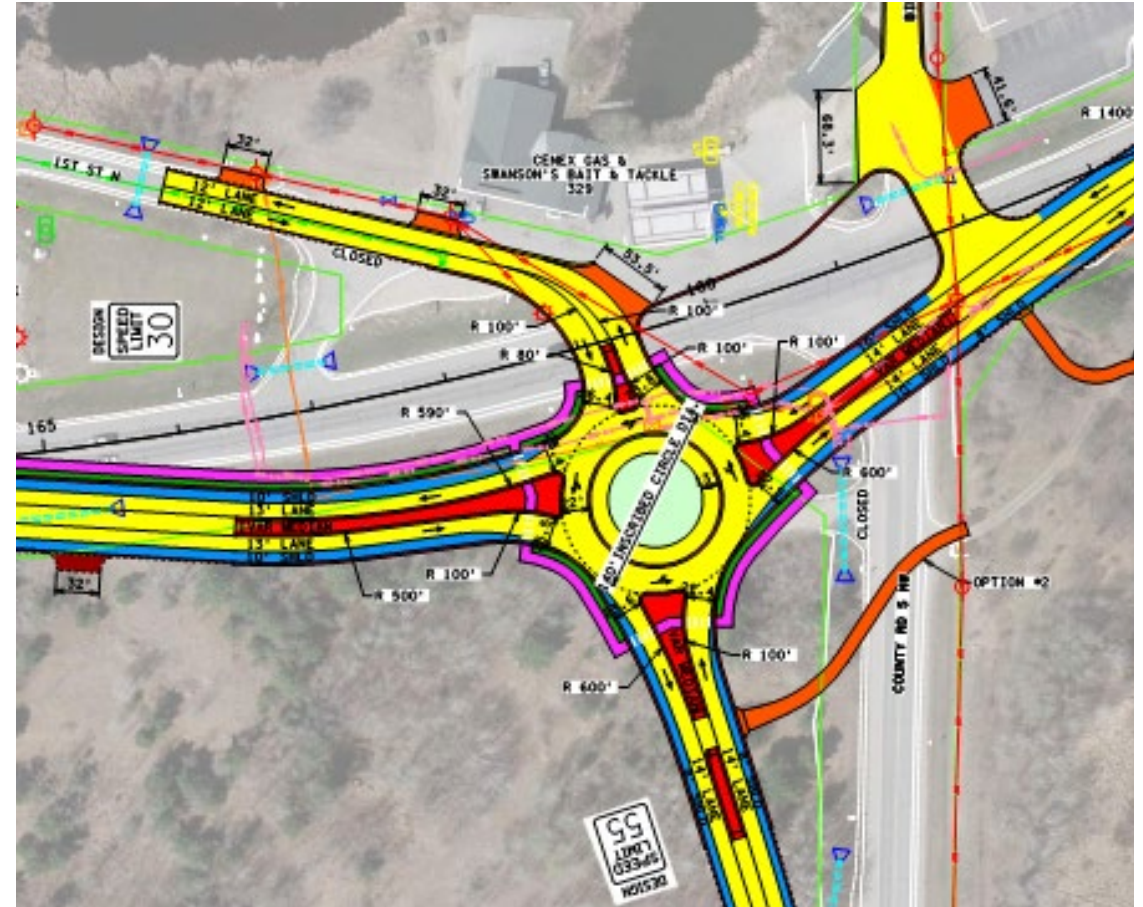
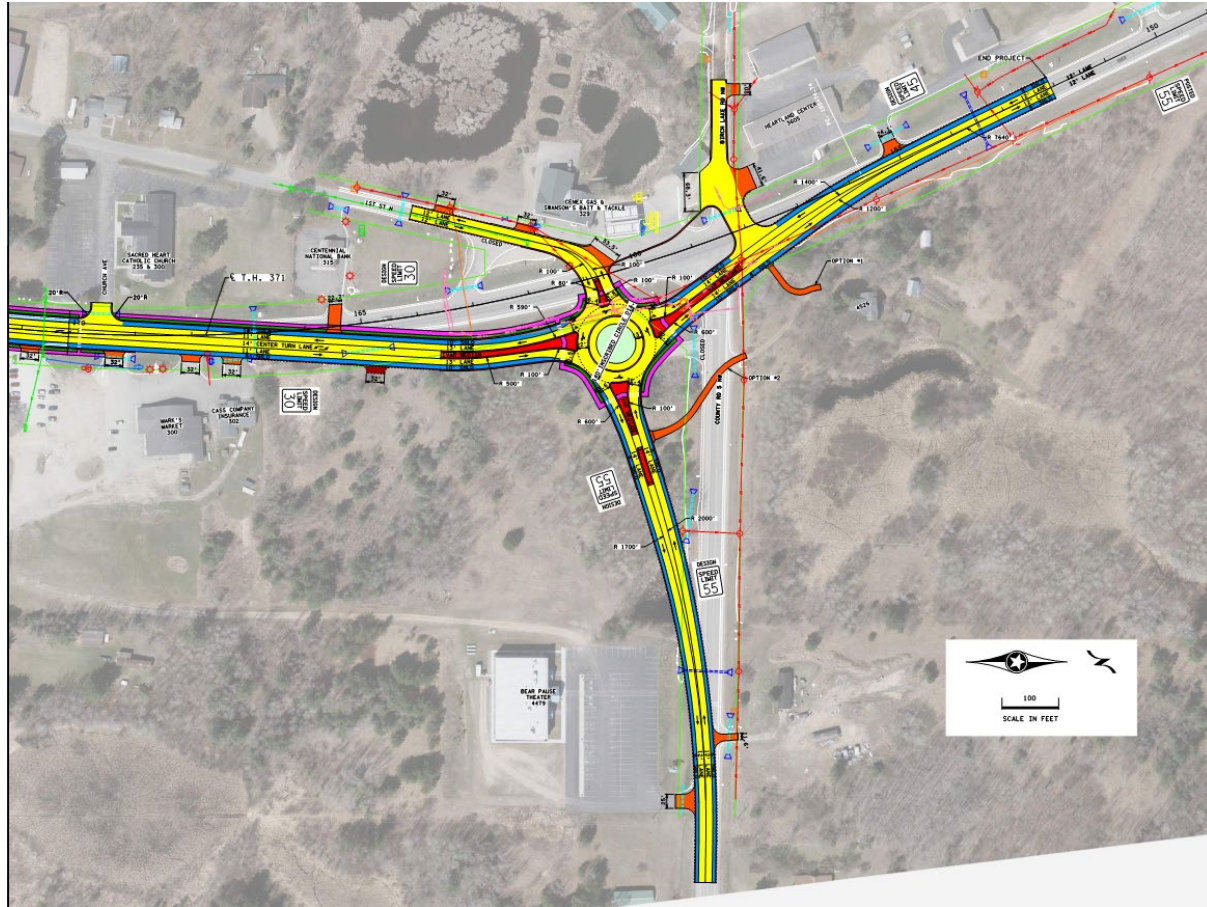
HWY 371/COUNTY HWY 5 INTERSECTION



SEE THE INITIAL ROUNDABOUT DESIGN



ROUNDBABOUT DESIGN



ROUNDABOUT

Elements

- Roundabouts are designed to accommodate a wide range of vehicle types such as semi-trucks, fuel tankers, as well as vehicles pulling a boat or a trailer. Each roundabout is designed to fit the needs of the specific location.
- The roundabout will be designed with crosswalks for pedestrians and bicyclists to navigate through the intersection.
- Provides a speed reduction measure at the intersection for traffic approaching Hackensack from the north as well as traffic leaving Hackensack from the south.

Benefits

- Allow motorists to get through the intersection more safely and in less time
- Handle more traffic with less delay than most stop signs or traffic signals
- Slow traffic down to make entering and exiting the area easier for all users
- Reduce the risk for higher speed crashes as traffic volumes increase

Looking Ahead:

NEXT STEPS





Stay Connected:

Contact:

 Cole Nelson, *Project Manager*

 cole.nelson@state.mn.us  651-234-7534

Learn More:

 www.mndot.gov/d2/projects/hwy371-hackensack



Sign up for the project mailing list to receive updates and learn about opportunities to help shape the vision for the corridor.